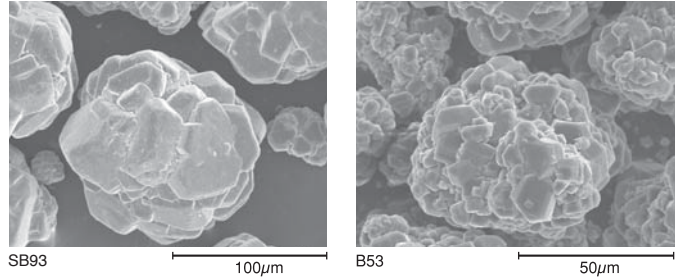


Regular/Coarse Grain Aluminum Hydroxide

Regular grain aluminum hydroxide SB92 and B52 are wet gibbsite crystalline powders, which show good reactivity and solubility in acids and alkalis. These are used to produce various chemical products such as aluminum sulfate, poly aluminum chloride and zeolite. SB93 and B53 are dried powder products. These are easy to handle making them suitable for many processes such as mixing. They are used as raw materials for glass and ceramics as well as flame retardant fillers.



Typical Properties

Grade	SB92	SB93	B52	B53
Moisture (%)	4~9	0.01	8~10	0.02
Na ₂ O (%)	0.27	0.26	0.20	0.20
SiO ₂ (%)	0.02	0.02	0.01	0.01
Fe ₂ O ₃ (%)	0.01	0.01	0.01	0.01
Al(OH) ₃ (%)	99.7	99.7	99.8	99.8
Ave. Particle Size (μm)	105	105	55	55
Angle of repose (deg)	—	32	—	40
pH	—	9	—	9

Applications

- (1) Aluminum sulfate, Poly aluminum chloride
Aluminum fluoride, Cryolite, Zeolite
- (2) Sodium aluminate
- (3) Synthetic mullite, Refractories
- (4) Ceramics, Glaze, Bedding powder
- (5) Glass, Glass fiber
- (6) Filler for rubbers and plastic
- (7) Catalyst carrier

Packing

- Bulk
Flexible container bag (500kg and 1000kg)
Paper bag (25kg)